

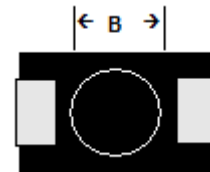
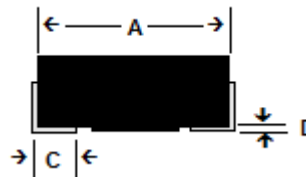
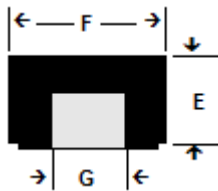


# Type PSM & PSL Molded

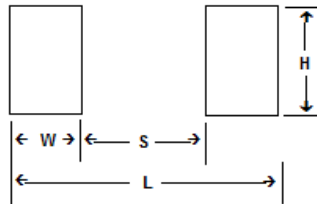
Surface Mount Resistors - Power Precision Wirewound Resistors  
Pacific Resistor Company

- SURFACE MOUNT - .5 TO 4 WATTS
- .003 TO 55,000 OHMS
- TOLERANCES TO +/- .005%
- EXTREME SURGE & PULSE TOLERANCE
- RoHS & NON INDUCTIVE STYLES AVAILABLE
- EXCELLENT TC LINEARITY
- FAST DELIVERY ON ANY VALUE
- HIGH THERMAL STABILITY

These Superbly Reliable Resistors meet and exceed MIL- R-26. Their precision, all welded construction results in exceptional strength, stability, and reliability even under the most demanding of conditions.



Foot Print Pattern



## SURFACE MOUNT Specifications (Per ANSI/IPC-SM-72)

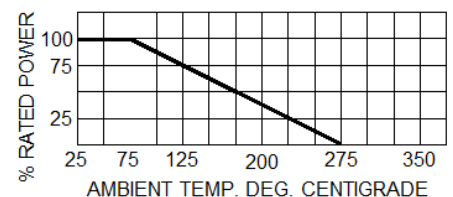
| TYPE    | WATTS | RESISTANCE        | A<br>Max. | B<br>W x H  | C<br>± .010" | D<br>± .003" | E<br>Max. | F<br>Max. | G<br>± .020" | FOOTPRINT |      |      |      |
|---------|-------|-------------------|-----------|-------------|--------------|--------------|-----------|-----------|--------------|-----------|------|------|------|
|         |       |                   |           |             |              |              |           |           |              | W         | H    | S    | L    |
| PSM-1/2 | 0.5   | .005 to 500 Ohms  | .210      | .100 x .005 | .040         | .006         | .110      | .130      | .060         | .062      | .100 | .125 | .250 |
| PSM-1   | 1     | .005 to 1.2K Ohms | .275      | .120 x .005 | .070         | .006         | .130      | .150      | .070         | .096      | .112 | .145 | .337 |
| PSM-2   | 2     | .005 to 18K Ohms  | .475      | .190 x .005 | .100         | .006         | .180      | .250      | .120         | .155      | .230 | .230 | .540 |
| PSM-3   | 3     | .005 to 18K Ohms  | .625      | .150 x .005 | .135         | .006         | .250      | .270      | .122         | .220      | .230 | .260 | .700 |
| PSM-4   | 4     | .005 to 55K Ohms  | .820      | .240 x .005 | .190         | .006         | .280      | .295      | .150         | .220      | .250 | .460 | .900 |
| PSL-1   | 1     | .003 to .01 Ohms  | .275      | .120 x .005 | .070         | .006         | .100      | .150      | .070         | .096      | .112 | .145 | .337 |
| PSL-2   | 2     | .003 to .01 Ohms  | .475      | .190 x .005 | .100         | .006         | .100      | .250      | .120         | .155      | .230 | .230 | .540 |

### Part Number Information:

(Sample part numbers) **PSM-1 - 15.4 - 1% - 1W**  
 (RoHS sample part numbers) **PSME-1 - 15.4 - 1% - 1W**  
 Style \_\_\_\_\_  
 Resistance Value (ohms) \_\_\_\_\_  
 Tolerance \_\_\_\_\_  
 Watts \_\_\_\_\_

*Non-Inductive*  
**PSMN-1 - 15.4 - 1% - 1W**  
**PSMEN-1 - 15.4 - 1% - 1W**

TYPE PSM DERATING CURVE



## Electrical

- **Non Inductive Styles Available**
- **RoHS compliant Styles Available**
- **Matched Sets Available**
- **Special TC's Available**
- **Tolerances:** 5%, 3%, 1%, .5%, .25%, .1%, .05%, .02%, .01%, .005%
- **Temperature Coefficient:**
  - 90 PPM < 1 OHM
  - 50 PPM < 10 OHM
  - 20 PPM > 10 OHM
- **Temperature Sensing TC's to 6000ppm**
- **Dielectric Strength:** 500VAC
- **Insulation Resistance:** not<1000 Meg
- **Short Term Overload:** 5 times rated wattage for 5 seconds.
- **Mil-Spec Burn-in Available**

## Mechanical

- **Encapsulated:** Special High Temperature Molded Encapsulation
- **Core:** Type A-Ceramic
- **Leads:** Tinned Copper Alloy
- **Solderability:** Meets Mil-Std-202 Method 208 & ANSI/J-Std-002
- **Construction:** Completely Welded
- **Marking:** Alpha Numeric
- **Reel Packaging in Embossed Carrier Tape**
- **Special Configurations Available**
- **Four Wire Kelvin Terminations Available**

**U.S. export law as contained in the International Traffic in Arms Regulations (ITAR) is applicable to the information contained in this document. This technical information is not to be placed in the public domain, exported from the U.S., or given to any foreign person in the U.S., without the prior specific written authorization of Pacific Resistor Co. and the U.S. Department of State.**

### **Pacific Resistor Co. Legal Disclaimer Notice**

#### **Notice**

**Specifications of the products referenced herein are subject to change without notice. Pacific Resistor Company, Inc., or anyone on its behalf, assumes no responsibility or liability for any errors or inaccuracies.**

**Information contained herein is intended to provide a product description only. No license, express or implied, by estoppel or otherwise, to any intellectual property rights is granted by this document. Except as provided in Pacific Resistor Company terms and conditions of sale for such products, Pacific Resistor Company assumes no liability whatsoever, and disclaims any express or implied warranty, relating to sale and/or use of Pacific Resistor Company products including liability or warranties relating to fitness for a**

**particular purpose, merchantability, or infringement of any patent, copyright, or other intellectual property right.**

**The products referenced herein are not designed for use in medical, life-saving, or life-sustaining applications. Customers using or selling these products for use in such applications do so at their own risk and agree to fully indemnify Pacific Resistor Company for any damages resulting from such improper use or sale.**